

# 695MH Crawler

Standard Operating Weight  
105,000 lbs.

KNUCKLEBOOM LOADERS > CRAWLER

SCRAP



## The Barko 695MH Crawler

Dependable. Exceptional. AWESOME.

That's what customers say about the Barko 695MH Crawler. It's equipped with EPIC, an advanced electronic control system, to make the 695MH POWERFUL. THRIFTY.

SMART. It provides the best fuel efficiency, work productivity, and the lowest total cost of operation of any other product in its class. It is BEAUTIFUL, but don't let that

fool you. The power and swing torque of

the 695MH Crawler makes it a BEAST capable of delivering more loads every day.

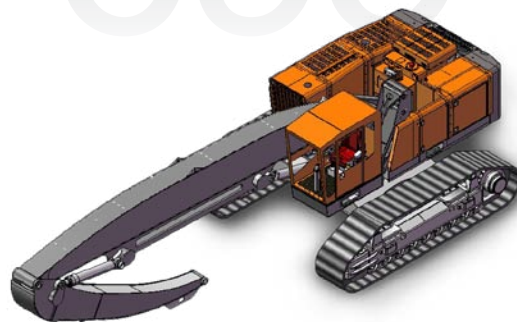
The 695MH Loader performs harder and delivers the results you expect, all while using less fuel and providing more comfort.

There's nothing better than a Barko –  
Guaranteed!

## The Barko Advantage

- Best in Class Lift Capacity
- Best in Class Power
- 24-Month Bumper-to-Bumper Warranty
- EPIC Control System
- 24-Hour Parts Shipment Guarantee
- Superior Serviceability
- Made in the U.S.A.

# 695



**BARKO HYDRAULICS, LLC**

One Banks Avenue | Superior, WI 54880 | Ph: 715.392.5641 | Fx: 715.392.3931

WWW.BARKO.COM

# 695MH Crawler

KNUCKLEBOOM LOADERS > CRAWLER

SCRAP

## MAXIMUM LIFT CAPACITY

51' 0" (15.5 m) straight boom, less attachment.

Front Lift Capacity

Radius	Lift
15' (4.6 m)	29,430 lbs. (13,350 kg)
20' (6.1 m)	32,680 lbs. (14,820 kg)
25' (7.6 m)	25,680 lbs. (11,650 kg)
30' (9.1 m)	21,070 lbs. (9,560 kg)
35' (10.7m)	17,780 lbs. (8,060 kg)
40' (12.2 m)	15,230 lbs. (6,910 kg)
45' (13.7m)	12,610 lbs. (5,720 kg)
50' (15.2m)	9,200 lbs. (4,170 kg)

Side Lift Capacity

Radius	Lift
15' (4.6 m)	29,430 lbs. (13,350 kg)
20' (6.1 m)	32,680 lbs. (14,820 kg)
25' (7.6 m)	25,240 lbs. (11,450 kg)
30' (9.1 m)	20,090 lbs. (9,110 kg)
35' (10.7m)	16,680 lbs. (7,560 kg)
40' (12.2 m)	13,370 lbs. (6,060 kg)
45' (13.7m)	10,640 lbs. (4,830 kg)
50' (15.2m)	8,450 lbs. (3,830 kg)

## BOOM DATA

Boom	51' 0" (15.5 m)	46' 0" (14.0 m)
Main	29' 0" (8.8 m)	29' 0" (8.8 m)
Stick	22' 0" (6.7 m)	17' 4" (5.3 m)

Boom structure: All welded construction with fabricated box type design. Bronze bushings with grease grooves at boom pivot points.

## BOOM REACH

Mounted on crawler.

Boom	51' 0" (15.5 m)	46' 0" (14.0 m)
Horizontal	51' 0" (15.5 m)	46' 5" (14.1 m)
Vertical	64' 4" (19.6 m)	49' 9" (15.1 m)

## CYLINDERS

Hydraulic cylinders with wear rings on pistons and glands for extended life.

All cylinders are made of heavy wall steel tubing. Induction hardened cylinder rods with heavy chrome plating.

Main boom: Dual 6.5" x 47" (165 mm x 1194 mm) with 4" (102 mm) rod.

Stick boom: Dual 6" x 41" (152 mm x 1041 mm) with 4" (102 mm) rod.

Hose break protection valves.

## POWER SOURCE

Cummins QSB 6.7L - Tier 3 220 HP (164 kW) @ 2000 RPM.

12V electric system.

Fuel reservoir: 125 gallon (475 L).

## HYDRAULIC SYSTEM

161 gallon (610 L) hydraulic oil reservoir with return line filter, shut off valve on pump suction lines.

Main Pumps: two variable displacement piston pumps producing 162 GPM (614 LPM).

Main system operating pressure: 4,350 PSI (300 BAR).

Heavy wall tubing and multi-wire braided hose throughout system

Quick disconnect diagnostic ports

Auto reversing hydraulic cooling fan

## HYDRAULIC SYSTEM (CONT)

Continuous rotation

## SWING SYSTEM

Continuous rotation on 54" (1372 mm) internal tooth turntable bearing.

Swing speed: 7 RPM - Power transmitted through dual piston motors & planetary gearboxes.

4,000 PSI (276 BAR) operating pressure.

Swing torque: 61,354 ft. lbs. (83.2 kN-m)

Tail Swing: 121" (3.07m)

## OPERATOR'S CAB

F.O.P.S. certified. 38-1/2" x 55" (978 mm x

1,397 mm) forward sloping pressurized cab with sound suppression insulation.

Roof window, sliding side windows, rear egress

window, with tinted glass on all windows.

Windshield wipers, washer, and dome light.

Air ride, heated seat with arm rests.

Dual joystick controls.

Dual foot pedal travel.

Dash console with cab accessory switches and start/stop controls all located for easy access.

Digital warning lights, monitor system and gauges.

AM/FM radio/ CD player/ CB radio

Rear hinged swing out door.

(4) 55 Watt DC lights on front.

(2) 55 Watt DC lights on back.

(1) 55 Watt DC lights on each side.

Climate controlled heating and air conditioning.

## CRAWLER LOWER - HEAVY DUTY

Speed (maximum)

1.3 MPH (2.1 km/h) low

2.3 MPH (3.7 km/h) high

Track: Barko heavy-duty (D 7 size) carbody, sealed track, lifetime lubricated rollers and idlers, hydraulic track adjusters and 710 mm (28") triple grouser pads with 22 mm track bolts.

Drive motors: two (2) variable displacement piston motors.

Brakes: Automatic multiple disc-type, spring applied hydraulic release, on each track.

Travel alarm

Gradability: 75%

Tractive Effort: 63,000 lbs. (280 KN)

Ground Pressure: 9.95 psi (0.68 BAR)

w/ 710 mm shoes triple grouser pads.

## ELEVATING CAB

95" (2.4m) of travel.

Maximum Height: 17' 6" (5.3 m) eye level.

Soft start/stop controls on joystick buttons.

Hydraulic suspension.

Manual cab lowering valve in cab and on platform.

## MISCELLANEOUS

Weight with standard equipment, cast steel counterweight & oil: 102,000 lbs. (46,258 kg) (not including attachment)

Equipment greased and hydraulic tank filled.

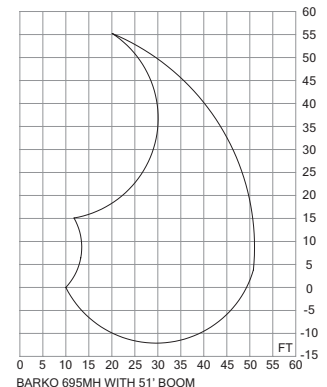
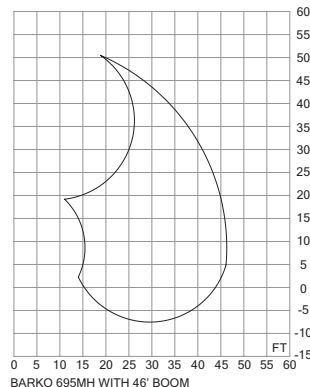
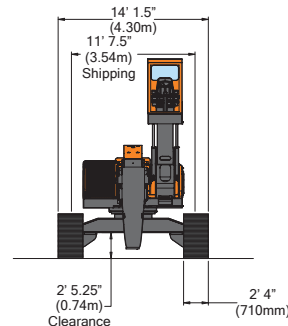
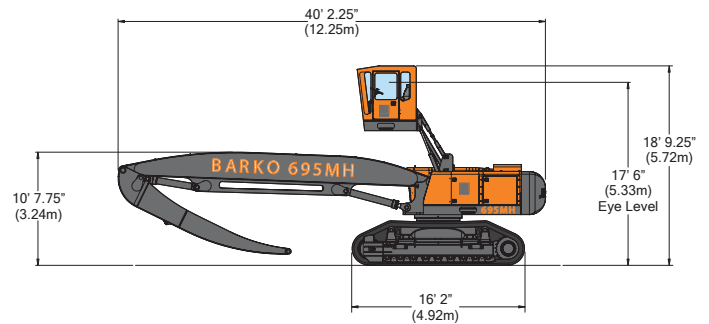
## OPTIONS

43' Live Heel Boom

46' Straight Boom (standard)

51' (15.5m) Straight Boom (optional)

Operator's Cab - front window guard



## OPTIONS (CONT.)

Grapples - orange peel ¾ yd or 1 yd

Generator packages - 15 to 33KW

Magnets - 48" to 67" diameter

Boom lights

Cold weather operating package

Automatic greasing system



**BARKO HYDRAULICS, LLC**

One Banks Avenue | Superior, WI 54880 | Ph: 715.392.5641 | Fx: 715.392.3931 | www.barko.com