

550 Crawler

KNUCKLEBOOM LOADERS > CRAWLERS

FORESTRY



Introducing the Barko 550 Crawler

Dependable. Exceptional. BEAUTIFUL. That's what customers say about the Barko 550 Crawler knuckleboom loader (material handler). Our most powerful crawling knuckleboom loader also provides the best fuel efficiency, increased work productivity, and the lowest total cost of operation than any other product on the market.

It is BEAUTIFUL, but don't let that fool you. The power and swing torque of the 550 Crawler makes it a BEAST capable of delivering up to 25% more loads every day. Snatch more and load it with effortless speed and ease. Equipped with more standard features than its competitors, the 550ML Crawler Loader lasts longer, performs harder, and delivers the results you expect, all while using less fuel and providing more comfort. You owe it to yourself to DEMO a Barko!



Visit our website at:
www.barko.com
to read customer testimonials



BARKO HYDRAULICS, LLC

One Banks Avenue | Superior, WI 54880 | Ph: 715.392.5641 | Fx: 715.392.3931

WWW.BARKO.COM

550 Crawler

KNUCKLEBOOM LOADERS > CRAWLERS

FORESTRY

MAXIMUM LIFT CAPACITY

50' 0" (15.24 m) straight boom, less attachment.

Radius	Lift	
15' (4.57 m)	18,690 lbs. (8,477 kg)	
20' (6.10 m)	33,180 lbs. (15,050 kg)	
25' (7.62 m)	26,430 lbs. (11,988 kg)	
30' (9.14 m)	21,840 lbs. (9,906 kg)	
35' (10.66 m)	18,470 lbs. (8,377 kg)	
40' (12.19 m)	15,980 lbs. (7,248 kg)	
45' (13.71 m)	13,990 lbs. (6,345 kg)	
50' (15.24 m)	7,670 lbs. (3,479 kg)	

BOOM DATA

	50' 0"	(15.24 m)
Main	27' 0"	(8.23 m)
Stick	23' 6"	(7.16 m)

Boom structure: All welded construction with fabricated box type design. Aluminum bronze bushings with grease grooves at boom pivot points.

BOOM REACH

Based on 48" (1219 mm) high carrier undercarriage.

	50' 0"	(15.24 m)
Horizontal	50' 0"	(15.24 m)
Vertical	54' 0"	(16.46 m)

CYLINDERS

Hydraulic cylinders with wear rings on pistons and bolt on glands for extended life. All cylinders are made of heavy wall steel tubing. Induction hardened cylinder rods with heavy chrome plating.

Main boom: two 7" x 66" (178 mm x 1676 mm) with 4" (102 mm) rod.

Stick boom: two 7" x 50" (178 mm x 1270 mm) with 4" (102 mm) rod.

Spherical bearings at all boom cylinder pivots.

AVAILABLE POWER SOURCES

Cummins M-11 350 hp (261 kW)

@ 2100 rpm.

Fuel Reservoir: 125 gallon (473 L).

HYDRAULIC SYSTEM

180 gallon (681 L) hydraulic oil reservoir with return line filter, shut off valve on pump suction line.

Pumps: Three variable displacement piston pumps producing 245 GPM (927 LPM).

Heavy wall tubing and multi-wire braided hose throughout system.

Main system operating pressure 2500 PSI (172 BAR).

Quick disconnect diagnostic ports.

SWING SYSTEM

Continuous rotation on 62" (1575 mm) internal tooth turntable bearing.

Swing speed 5.5 RPM - Power transmitted through dual motors and planetary gearboxes.

2500 PSI (172 BAR) operating pressure.

Swing Torque: 76,850 ft. lbs (101,194 Nm) (100% theoretical).

Tailswing: 11' 8" (3.56 m) with counterweight.

OPERATOR'S CAB

F.O.P.S. certified.

38-1/2" x 55" (978 mm x 1397 mm) forward sloping pressurized cab with sound suppression insulation.

Roof window, sliding side windows with tinted glass on all windows.

Pantograph windshield wipers, washer, and dome light.

Adjustable suspension style seat with arm rests.

Dual joystick controls.

Dash console with cab accessory switches and start/stop controls all located for easy access.

Warning lights & monitor system.

Digital Display: water temperature, voltage, engine oil pressure, fuel, hour meter and engine RPM.

AM/FM radio, CD player, CB radio.

Swing control operated by foot pedal.

Swing out door and front cab guard.

(6) 12 volt DC halogen cab lights.

Climate controlled heating and air conditioning.

Central turntable greasing system.

CRAWLER LOWER - HEAVY DUTY

Speed (maximum)

0.8 MPH (1.3 km/h) low

2.0 MPH (3.2 km/h) high

Track: 330 L carbody, sealed track, lifetime lubricated rollers and idlers, hydraulic track adjusters and 750 mm (29.5") triple grouser pads with 22 mm track bolts.

Drive motors: two (2) variable displacement piston motors.

Brakes: Automatic multiple disc-type, spring applied hydraulic release, on each track.

Drawbar Pull: 73,150 lbs. (33,210 kg)

@ 2,900 PSI (200 BAR)

Turnability Ratio: 0.52 @ 2,500 PSI (172 BAR)

MISCELLANEOUS

Weight with standard equipment (upper only), 13,000 lb. (5,902 kg) cast steel counterweight and oil: 105,000 lbs (47,670 kg).

Equipment greased and hydraulic tank filled.

Removable panels for serviceability

Mechanical swing lock

OPTIONS/ACCESSORIES

50' Straight Boom

43' Live Heel Boom

55' Three Section Boom

Boom Lights

12,800 lb. (5,806 kg) Cast steel counter weight.

16,000 lb. (7,257 kg) Cast steel counter weight.

23,000 lb. (10,432 kg) Cast steel counter weight.

Standard detachable heel bar

Offset detachable heel bar

Log & Pulp Grapples

Scrap Grapples

Servo Controlled Hand Swing

16" Fixed Cab Riser

36" Fixed Cab Riser

48" Fixed Cab Riser

36" Hydraulic Tilt Cab Riser

48" Hydraulic Tilt Cab Riser

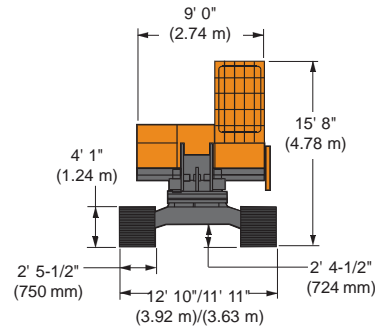
12V Hydraulic Transfer Pump

Engine Block Heater

Thermal Bypass Kit

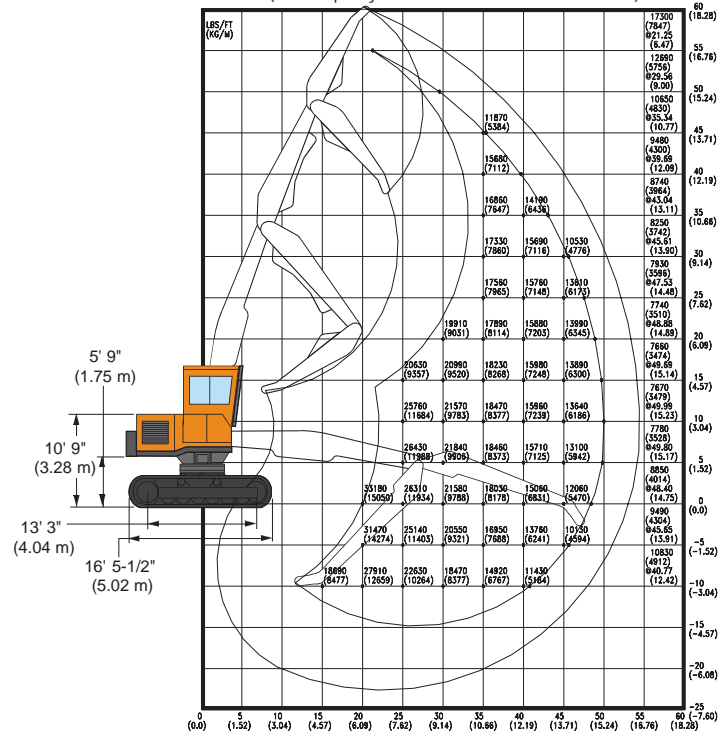
Tank Heater

See complete listing of options on our website.



50' STRAIGHT BOOM WORKING RANGE

(outer capacity referenced for 55' tri-knuckle boom) -



Capacities are based on 100% hydraulic efficiency less attachment.



BARKO HYDRAULICS, LLC

One Banks Avenue | Superior, WI 54880 | Ph: 715.392.5641 | Fx: 715.392.3931 | www.barko.com