

495ML Magnum Articulated Carrier

KNUCKLEBOOM LOADERS > SELF-PROPELLED

FORESTRY



Introducing the Barko 495ML Magnum Articulated Carrier

All the quality, performance and fuel efficiency of our 295ML Magnum knuckleboom loader (material handler), mounted to our articulated carrier. The Barko 295ML Magnum Articulated Carrier provides the best fuel efficiency, increased work productivity, and the lowest total cost of operation than any other product on the market.

The power and swing torque of the Barko 295ML Magnum Articulated Carrier makes it a BEAST capable of delivering up to 25% more loads every day. Equipped with more standard features than its competitors, the 295ML Magnum Loader lasts longer, performs harder, and delivers the results you expect, all while using less fuel and providing more comfort. There's nothing better than a Barko – Guaranteed!



“Our Barko loaders only use 3 to 3.5 gallons of fuel an hour.”

Darren and Carl Harrison (Kevin Harrison not shown)
Harrison Logging Inc.
Grenada, MS



BARKO HYDRAULICS, LLC

One Banks Avenue | Superior, WI 54880 | Ph: 715.392.5641 | Fx: 715.392.3931



WWW.BARKO.COM

495ML Magnum Articulated Carrier

KNUCKLEBOOM LOADERS > SELF-PROPELLED

FORESTRY

MAXIMUM LIFT CAPACITY

32' 0" (9.75 m) straight boom, less attachment.		
Radius	Lift	
12' (3.65 m)	27,720 lbs. (12,574 kg)	
15' (4.57 m)	21,960 lbs. (9,961 kg)	
20' (6.10 m)	16,350 lbs. (7,416 kg)	
25' (7.62 m)	12,990 lbs. (5,892 kg)	
30' (9.14 m)	9,280 lbs. (4,209 kg)	
32' (9.75 m)	5,590 lbs. (2,535 kg)	

BOOM DATA

	32' 0"	(9.75 m)
Main	18' 6"	(5.64 m)
Stick	13' 10"	(4.22 m)

Boom structure: All welded construction with fabricated box type design. Aluminum bronze bushings with grease grooves at boom pivot points.

BOOM REACH

Based on 42" (1067mm) high truck frame.

	32' 0"	(9.75 m)
Horizontal	32' 0"	(9.75 m)
Vertical	38' 4"	(11.68 m)

CYLINDERS

Hydraulic cylinders with wear rings on pistons and bolt on glands for extended life. All cylinders are made of heavy wall steel tubing. Induction hardened cylinder rods with heavy chrome plating.

- Main boom: 6" x 51" (152mm x 1295mm) with 3-1/2" (89mm) rod.
- Stick boom: 6" x 35" (152 mm x 889 mm) with 3-1/2" (89 mm) rod.
- Spherical bearings at all boom cylinder pivots.

AVAILABLE POWER SOURCES

- Cummins QSB 6.7 L diesel, Tier 3 173 hp (129 kw) @ 2200 rpm.
- John Deere 6068H diesel, Tier 3 173 hp (129 kw) @ 2200 rpm
- Fuel Reservoir: 120 gallon (454 L).

HYDRAULIC SYSTEM

- 120 gallon (454 L) hydraulic oil reservoir with return line filter, shut off valve on pump suction line.
- Pumps: Variable displacement piston pump producing 88 gpm (333 LPM).
- Heavy wall tubing and multi-wire braided hose throughout system.
- Main system operating pressure 3600 PSI (248 BAR).
- Quick disconnect diagnostic ports.

SWING SYSTEM

- Continuous rotation on 46" (1168 mm) internal tooth turntable bearing.
- Swing speed 9 rpm - power transmitted through dual motors and planetary gearboxes.
- 3600 psi (248 BAR) operating pressure.
- Swing Torque: 44,000 ft. lbs. (59,656 Nm) (100% Theoretical).
- Tailswing: 8' 5-1/2" (2.57 m) without counterweight
- 8' 6-1/2" (2.60 m) with optional counterweight.

OPERATOR'S CAB

- F.O.P.S. certified.
- 38-1/2" x 55" (978 mm x 1397 mm) forward sloping pressurized cab with sound suppression insulation.
- Roof window, sliding side window, with tinted glass on all windows.
- Pantograph windshield wipers, washer, and dome light.
- Adjustable suspension style seat with arm rests.
- Dual joystick controls.
- Dash console with cab accessory switches and start/stop controls all located for easy access.
- Warning lights & monitor system.
- Digital Display: water temperature, voltage, engine oil pressure, fuel, hour meter and engine RPM.
- AM/FM radio, CD player, CB radio.
- Swing control operated by foot pedal.
- Swing out door and front cab guard.
- (6) 12 volt DC halogen cab lights.
- Climate controlled heating and air conditioning.
- Central turntable greasing system.

STABILIZERS/SUBFRAME/PADS

- Center mount
- Unitized subframe and stabilizer assembly.
- 2 sets 14' 9" (4.49 m) fold-a-way stabilizer with 6" x 22" (152 mm x 559 mm) cylinders with 3-1/2" (89 mm) rods and dual load locks, pistons and bolt on glands with wear rings.

ART CAR LOWER

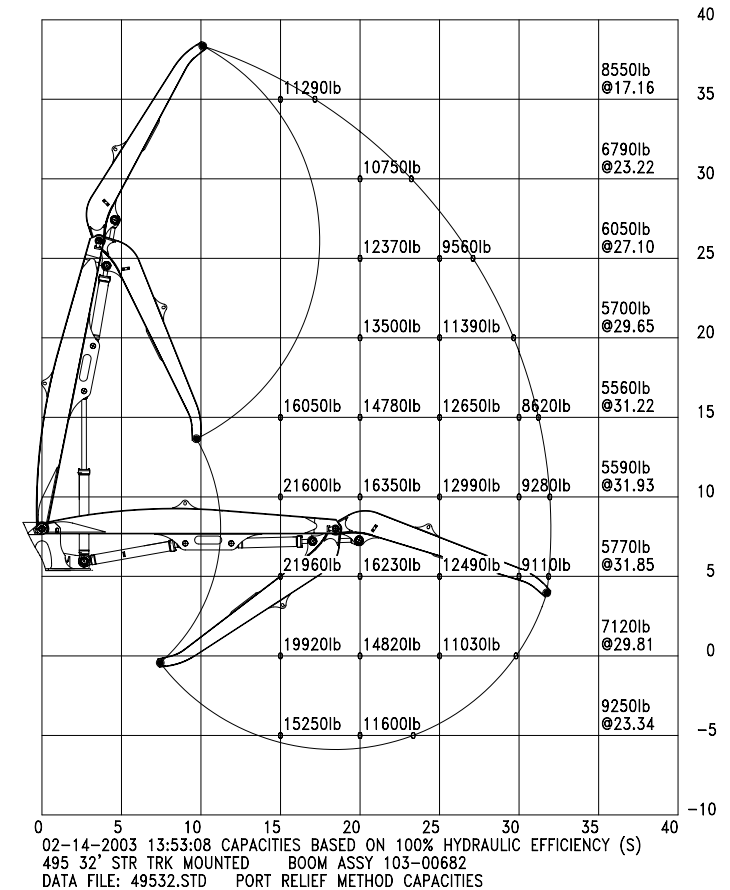
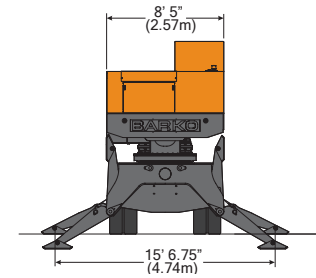
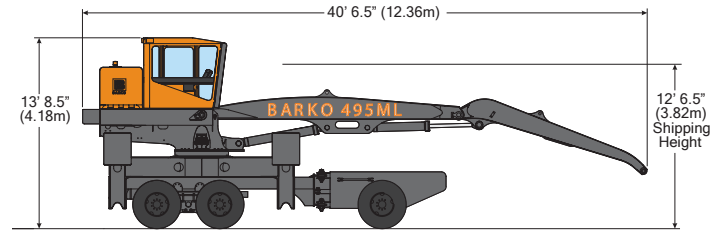
- Hydrostatic drive
- Oscillating non-powered front axle rated for 23,000 lbs. (10,433 kg)
- Truck style tandem rear axles rated for 50,000 lbs. (22,680 kg)
- Orbitol steering with 3-1/2" x 12" (89 mm x 305 mm) cylinders
- Hydraulic rear wheel brakes
- Low Speed: 3 MPH (4.8 km/h)
- High Speed 6 MPH (9.6 km/h)
- Drawbar pull: 10,000 lbs (45,371 N)
- Wheelbase: 13' 11" (4.24 m)
- Rear tires: (8) 10:00 x 20 - 12 Ply (ReCaps)
- Front tires: (2) 15 x 22.5 16 ply
- Spring applied hydraulic released parking brakes
- Articulating nose cavity serves as a fillable counterweight box

MISCELLANEOUS

- Weight with standard equipment: 50,200 lbs. (22,771 kg) not including attachment.
- Equipment greased and hydraulic tank filled.
- Removable panel for serviceability.
- Bar slasher/delimiter.
- 3,000 lbs. (1361kg) Cast Steel Counterweight & oil.

OPTIONS/ACCESSORIES

- 32' Straight Boom
- 32' Live Heel Boom
- 29' 4" Coil Handler Boom
- Boom Lights
- Standard detachable heel bar
- Offset detachable heel bar
- Log & Pulp Grapples
- Grapple Saw



See complete listing of options on our website.



BARKO HYDRAULICS, LLC

One Banks Avenue | Superior, WI 54880 | Ph: 715.392.5641 | Fx: 715.392.3931 | www.barko.com