

495ML Magnum Rugged Self-Propelled Carrier

PRELIMINARY

KNUCKLEBOOM LOADERS > SELF-PROPELLED

FORESTRY



Introducing the Barko 495ML Magnum Rugged Self-Propelled Carrier

All the quality, performance and fuel efficiency of our 495ML Magnum knuckleboom loader (material handler), mounted to our rugged self-propelled carrier. The Barko 495ML Magnum Rugged Self-Propelled Carrier provides the best fuel efficiency, increased work productivity, and the lowest total cost of operation than any other product on the market. The power and swing torque of the Barko 495ML Magnum Rugged Self-Propelled Carrier makes it a BEAST capable of delivering up to 25% more loads every day. Equipped with more standard features than its competitors, the 495ML Magnum Loader lasts longer, performs harder, and delivers the results you expect, all while using less fuel and providing more comfort. There's nothing better than a Barko – Guaranteed!



"Our Barko loaders only use
3 to 3.5 gallons of fuel an hour."

Darren and Carl Harrison (Kevin Harrison not shown)
Harrison Logging Inc.
Grenada, MS

495



BARKO HYDRAULICS, LLC

One Banks Avenue | Superior, WI 54880 | Ph: 715.392.5641 | Fx: 715.392.3931

WWW.BARKO.COM

495ML Magnum

Rugged Self-Propelled Carrier

KNUCKLEBOOM LOADERS > SELF-PROPELLED

FORESTRY

MAXIMUM LIFT CAPACITY

32' 0" (9.75 m)	straight boom, less attachment.
Radius	Lift
12' (3.65 m)	27,720 lbs. (12,574 kg)
15' (4.57 m)	21,960 lbs. (9,961 kg)
20' (6.10 m)	16,350 lbs. (7,416 kg)
25' (7.62 m)	12,990 lbs. (5,892 kg)
30' (9.14 m)	9,280 lbs. (4,209 kg)
32' (9.75 m)	5,590 lbs. (2,535 kg)

BOOM DATA

Main	32' 0"	(9.75 m)
Stick	18' 6"	(5.64 m)
	13' 10"	(4.22 m)

Boom structure: All welded construction with fabricated box type design. Aluminum bronze bushings with grease grooves at boom pivot points.

BOOM REACH

Based on 42" (1067mm) high truck frame.

Horizontal	32' 0"	(9.75 m)
Vertical	38' 4"	(11.68 m)

CYLINDERS

Hydraulic cylinders with wear rings on pistons and bolt on glands for extended life. All cylinders are made of heavy wall steel tubing. Induction hardened cylinder rods with heavy chrome plating.

- Main boom: 6" x 51" (152mm x 1295mm) with 3-1/2" (89mm) rod.
- Stick boom: 6" x 35" (152 mm x 889 mm) with 3-1/2" (89 mm) rod.
- Spherical bearings at all boom cylinder pivots.

AVAILABLE POWER SOURCES

- Cummins QSB 6.7 L diesel, Tier 3 173 hp (129 kw) @ 2200 rpm.
- John Deere 6068H diesel, Tier 3 173 hp (129 kw) @ 2200 rpm
- Fuel Reservoir: 120 gallon (454 L).

HYDRAULIC SYSTEM

- 120 gallon (454 L) hydraulic oil reservoir with return line filter, shut off valve on pump suction line.
- Pumps: Variable displacement piston pump producing 88 gpm (333 LPM).
- Heavy wall tubing and multi-wire braided hose throughout system.
- Main system operating pressure 3600 PSI (248 BAR).
- Quick disconnect diagnostic ports.

SWING SYSTEM

- Continuous rotation on 46" (1168 mm) internal tooth turntable bearing.
- Swing speed 9 rpm - power transmitted through dual motors and planetary gearboxes.
- 3600 psi (248 BAR) operating pressure.
- Swing Torque: 44,000 ft. lbs. (59,656 Nm) (100% Theoretical).
- Tailswing: 8' 5-1/2" (2.57 m) without counterweight
- 8' 6-1/2" (2.60 m) with optional counterweight.

OPERATOR'S CAB

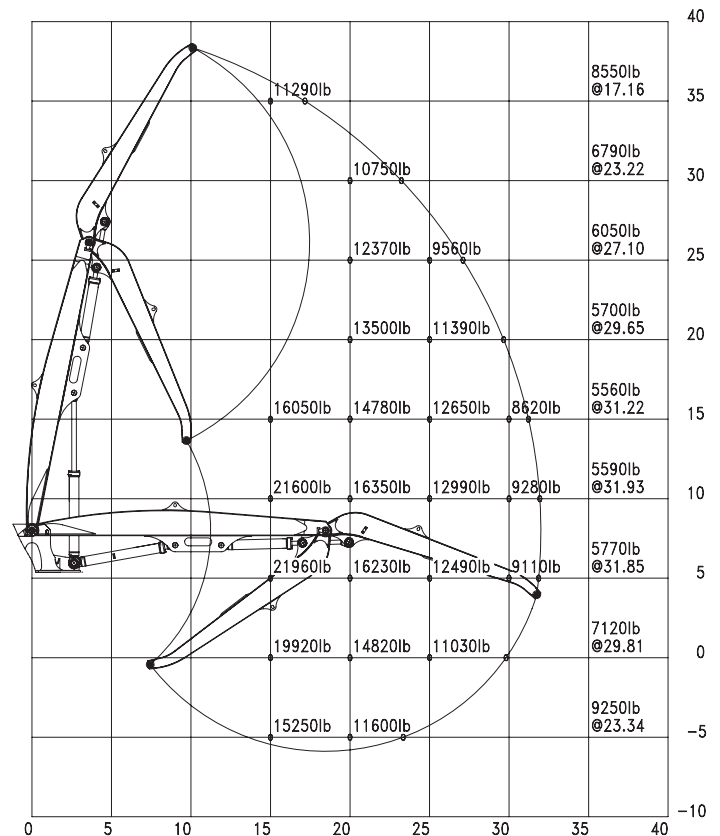
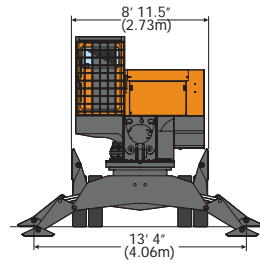
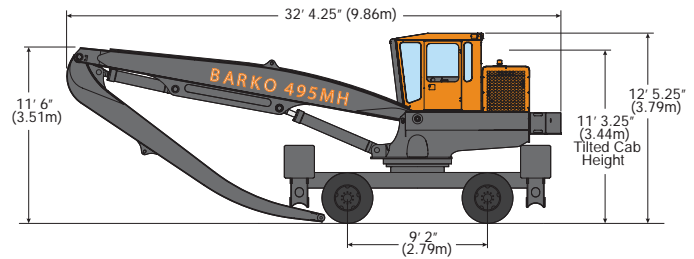
- F.O.P.S. certified.
- 38-1/2" x 55" (978 mm x 1397 mm) forward sloping pressurized cab with sound suppression insulation.
- Roof window, sliding side window, with tinted glass on all windows.
- Pantograph windshield wipers, washer, and dome light.
- Adjustable suspension style seat with arm rests.
- Dual joystick controls.
- Dash console with cab accessory switches and start/stop controls all located for easy access.
- Warning lights & monitor system.
- Digital Display: water temperature, voltage, engine oil pressure, fuel, hour meter and engine RPM.
- AM/FM radio, CD player, CB radio.
- Swing control operated by foot pedal.
- Swing out door and front cab guard.
- (6) 12 volt DC halogen cab lights.
- Climate controlled heating and air conditioning.
- Central turntable greasing system.

UNDERCARRIAGE

- Hydrostatic Drive: Two speed, 4WD powershift transmission powered by a single variable displacement piston motor.
- Axes: Planetary drive axles front and rear.
- Front oscillating 7 degrees in frame and rear rigid to frame.
- Service Brakes: Hydrostatic-dynamic braking mechanism.
- Hydraulic multi-disc brakes on all four wheels operated by foot pedal.
- Parking Brakes: SAHR brake acting on transmission.
- Travel Alarm
- Steering: Hydraulic two wheel steering.
- Stabilizers: Front and rear mounted fold-down type hydraulic stabilizer legs with a 13' 4" (4.06 m) spread, four double acting cylinders with lock valves, 7" bore x 22" stroke (177 mm x 885 mm) with 4" (101 mm) rods.
- Low Speed: 12 MPH (19 km/h)
- High Speed: 3 MPH (4.8 km/h)
- Maximum Gradeability: 43%
- Wheelbase: 9' 0" (2.74 m)
- Turning Radius: 22' 1" (6.73 m) outside tires.

MISCELLANEOUS

- Weight with standard equipment, 10,000 lb. (4,536 kg) cast steel counterweight and oil: 46,000 lbs. (20,800 kg) (not including attachment)
- Equipment greased and hydraulic tank filled.
- Removable panel for serviceability.



02-14-2003 13:53:08 CAPACITIES BASED ON 100% HYDRAULIC EFFICIENCY (S)
 495 32' STR TRK MOUNTED BOOM ASSY 103-00682
 DATA FILE: 49532.STD PORT RELIEF METHOD CAPACITIES



BARKO HYDRAULICS, LLC

One Banks Avenue | Superior, WI 54880 | Ph: 715.392.5641 | Fx: 715.392.3931 | www.barko.com