

295ML Magnum Articulated Carrier

KNUCKLEBOOM LOADERS > SELF-PROPELLED

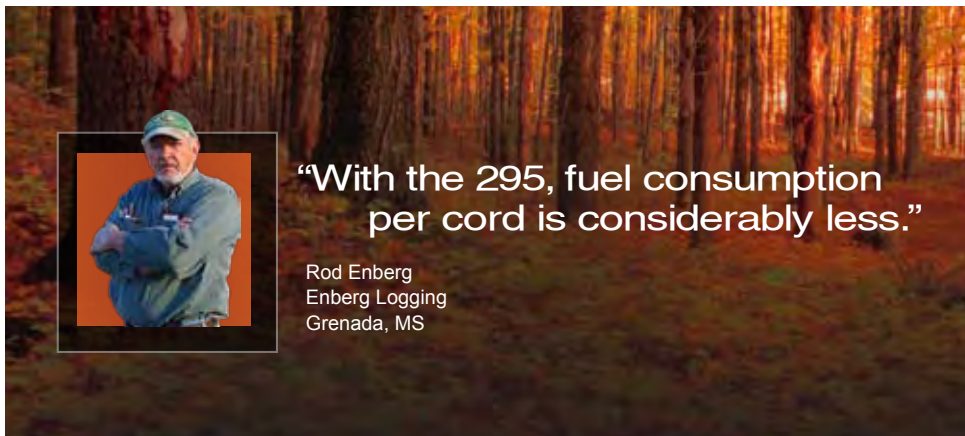
FORESTRY



Introducing the Barko 295ML Magnum Articulated Carrier

All the quality, performance and fuel efficiency of our 295ML Magnum knuckleboom loader (material handler), mounted to our articulated carrier. The Barko 295ML Magnum Articulated Carrier provides the best fuel efficiency, increased work productivity, and the lowest total cost of operation than any other product on the market.

The power and swing torque of the Barko 295ML Magnum Articulated Carrier makes it a BEAST capable of delivering up to 25% more loads every day. Equipped with more standard features than its competitors, the 295ML Magnum Loader lasts longer, performs harder, and delivers the results you expect, all while using less fuel and providing more comfort. There's nothing better than a Barko – Guaranteed!



“With the 295, fuel consumption per cord is considerably less.”

Rod Enberg
Enberg Logging
Grenada, MS



BARKO HYDRAULICS, LLC

One Banks Avenue | Superior, WI 54880 | Ph: 715.392.5641 | Fx: 715.392.3931

WWW.BARKO.COM

295ML Magnum Articulated Carrier

KNUCKLEBOOM LOADERS > SELF-PROPELLED

FORESTRY

MAXIMUM LIFT CAPACITY

30' 0" (9.14 m) straight boom, less attachment.

Radius	Lift	
10' (3.05 m)	19,960 lbs.	(9,054 kg)
15' (4.57 m)	17,390 lbs.	(7,888 kg)
20' (6.10 m)	12,920 lbs.	(5,860 kg)
25' (7.62 m)	10,240 lbs.	(4,644 kg)
30' (9.14 m)	5,420 lbs.	(2,458 kg)

BOOM DATA

	30' 0"	(9.14 m)
Main	16' 8"	(5.08 m)
Stick	13' 6"	(4.11 m)

Boom structure: All welded construction with fabricated box type design. Aluminum bronze bushings with grease grooves at boom pivot points.

BOOM REACH

Based on 42" (1,067 mm) high truck frame.

	30' 0"	(9.14 m)
Horizontal	30' 0"	(9.14 m)
Vertical	37' 6"	(11.43 m)

CYLINDERS

Hydraulic cylinders with wear rings on pistons and bolt on glands for extended life. All cylinders are made of heavy wall steel tubing. Induction hardened cylinder rods with heavy chrome plating.

Main boom: 6" x 51" (152 mm x 1295 mm) with 3-1/2" (89 mm) rod.

Stick boom: 6" x 35" (152 mm x 889 mm) with 3-1/2" (89 mm) rod.

Spherical bearings at all boom cylinder pivots.

AVAILABLE POWER SOURCES

Cummins QSB 6.7 diesel Tier 3 173 hp (129 kw)

@ 2200 RPM.

John Deere 6068 H diesel, Tier 3 173 hp (129 kw)

@ 2200 RPM

Fuel Reservoir: 120 gallon (454 L).

HYDRAULIC SYSTEM

120 gallon (454 L) hydraulic oil reservoir with return line filter, shut off valve on pump suction line.

Pumps: Variable displacement piston pump producing 88 gpm (333 LPM).

Heavy wall tubing and multi-wire braided hose throughout system.

Main system operating pressure 3000 PSI (206 BAR).

Quick disconnect diagnostic ports.

SWING SYSTEM

Continuous rotation on 39" (889 mm) internal tooth turntable bearing.

Swing speed 8 RPM - Power transmitted through dual motors and planetary gearboxes.

3000 PSI (206 BAR) operating pressure.

Swing Torque: 30,000 ft. lbs (40,674 Nm) (100% Theoretical).

Tailswing: 8' 5-1/2" (2.57 m) without counterweight

8' 6-1/2" (2.6 m) with optional counterweight.

OPERATOR'S CAB

F.O.P.S. certified.

38-1/2" x 55" (978 mm x 1397 mm) forward sloping pressurized cab with sound suppression insulation.

Roof window, sliding side windows with tinted glass on all windows.

Pantograph windshield wipers, washer, and dome light.

Adjustable suspension style seat with arm rests. Dual joystick controls.

Dash console with cab accessory switches and start/stop controls all located for easy access.

Warning lights & monitor system.

Digital Display: water temperature, voltage, engine oil pressure, fuel, hour meter and engine RPM.

AM/FM radio, CD player, CB radio.

Swing control operated by foot pedal.

Swing out door and front cab guard.

(6) 12 volt DC halogen cab lights.

Climate controlled heating and air conditioning.

Central turntable greasing system.

STABILIZERS/SUBFRAME/PADS

Center mount.

Unitized subframe and stabilizer assembly, plated pins. 2 sets of 14' 6" (4.42 m) fold-a-way stabilizers with 6" (152 mm) x 17" (432 mm) cylinders with 3" (76 mm) rods and built-in dual load locks, steel pistons and glands with wear rings.

ART CAR LOWER

Hydrostatic drive

Oscillating non-powered front axle rated for 23,000 lbs. (10,433 kg)

Truck style tandem rear axles rated for 43,500 lbs. (19,731 kg)

Orbitol steering with 3-1/2" x 12" (89 mm x 305 mm) cylinders

Hydraulic rear wheel brakes

Low Speed 3 MPH (4.8 km/h)

High Speed 6 MPH (9.6 km/h)

Drawbar pull: 10,000 lbs (45,371 N)

Wheelbase: 13' 11" (4.24 m)

Rear tires: (8) 10:00 x 20 - 12 Ply (ReCaps)

Front tires: (2) 15 x 22.5 16 ply

Spring applied hydraulic released parking brakes

Articulating nose cavity serves as a fillable counterweight box

MISCELLANEOUS

Weight with standard equipment: 43,500 lbs. (19,731 kg) not including attachment.

Equipment greased and hydraulic tank filled.

Removable panel for serviceability.

3,000 lbs. (1361kg) Cast Steel Counterweight & oil.

OPTIONS/ACCESSORIES

30' Straight Boom

30' Live Heel Boom

Boom Lights

Standard detachable heel bar

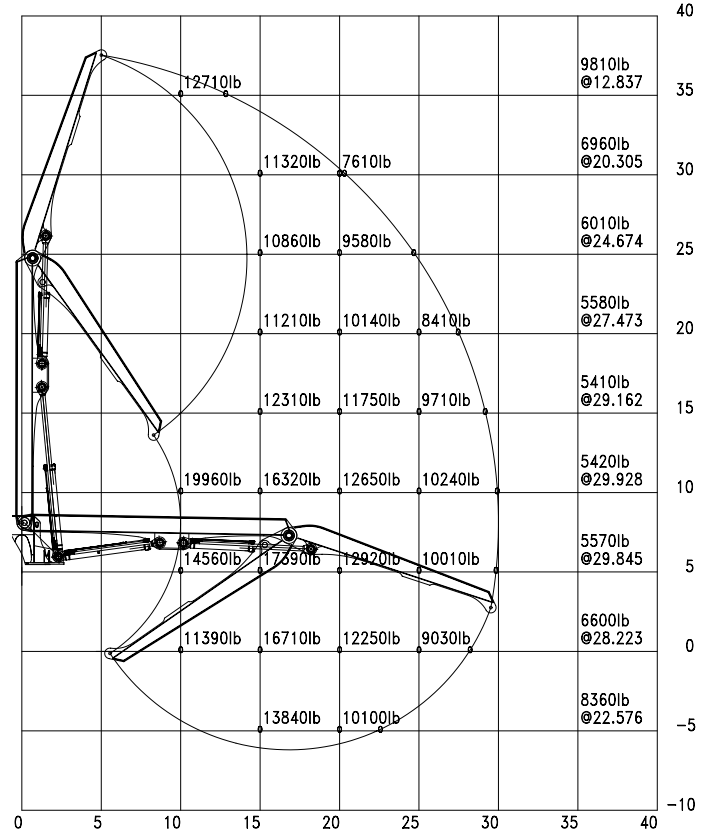
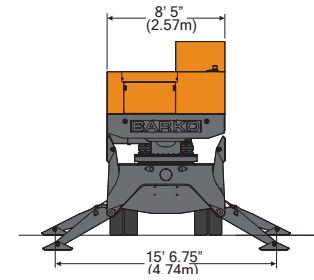
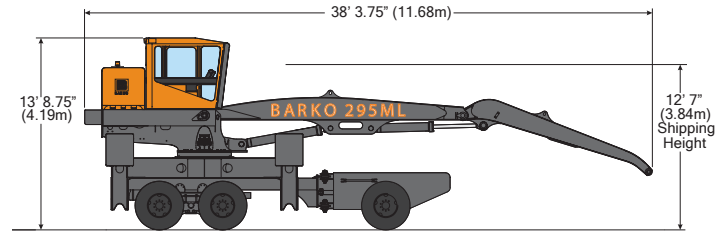
Offset detachable heel bar

Log & Pulp Grapples

Grapple Saw

Servo Controlled Hand Swing

See complete listing of options on our website.



MODEL 295ML GENERAL
ARRANGEMENT/WORKING RANGE
PORT RELIEF LIFT CAPS



BARKO HYDRAULICS, LLC

One Banks Avenue | Superior, WI 54880 | Ph: 715.392.5641 | Fx: 715.392.3931 | www.barko.com