

295ML Magnum Rugged Self-Propelled Carrier

PRELIMINARY

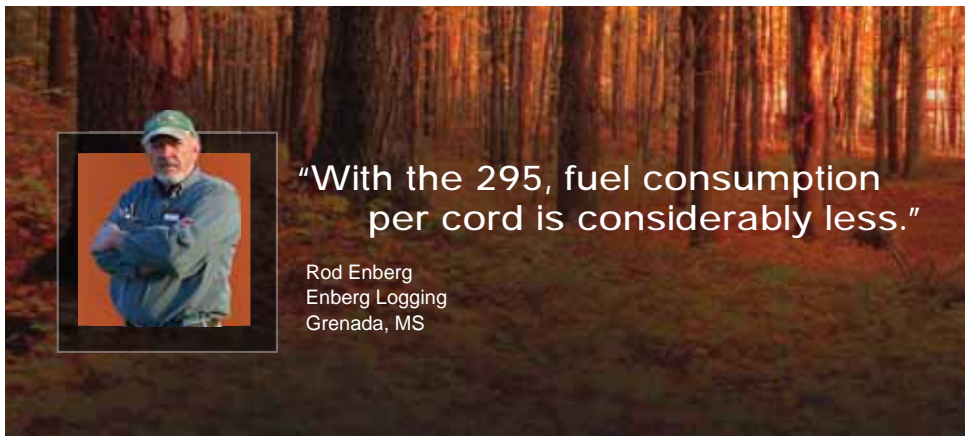
KNUCKLEBOOM LOADERS > SELF-PROPELLED

FORESTRY



Introducing the Barko 295ML Magnum Rugged Self-Propelled Carrier

All the quality, performance and fuel efficiency of our 295ML Magnum knuckleboom loader (material handler), mounted to our rugged self-propelled carrier. The Barko 295ML Magnum Rugged Self-Propelled Carrier provides the best fuel efficiency, increased work productivity, and the lowest total cost of operation than any other product on the market. The power and swing torque of the Barko 295ML Magnum Rugged Self-Propelled Carrier makes it a BEAST capable of delivering up to 25% more loads every day. Equipped with more standard features than its competitors, the 295ML Magnum Loader lasts longer, performs harder, and delivers the results you expect, all while using less fuel and providing more comfort. There's nothing better than a Barko – Guaranteed!



"With the 295, fuel consumption per cord is considerably less."

Rod Enberg
Enberg Logging
Grenada, MS



BARKO HYDRAULICS, LLC

One Banks Avenue | Superior, WI 54880 | Ph: 715.392.5641 | Fx: 715.392.3931

WWW.BARKO.COM

295ML Magnum

Rugged Self-Propelled Carrier

KNUCKLEBOOM LOADERS > SELF-PROPELLED

FORESTRY

MAXIMUM LIFT CAPACITY

30' 0" (9.14 m) straight boom, less attachment.		
Radius	Lift	
10' (3.05 m)	19,960 lbs.	(9,504 kg)
15' (4.57 m)	17,390 lbs.	(7,888 kg)
20' (6.10 m)	12,920 lbs.	(5,860 kg)
25' (7.62 m)	10,240 lbs.	(4,644 kg)
30' (9.14 m)	5,420 lbs.	(2,458 kg)

BOOM DATA

	30' 0"	(9.14 m)
Main	16' 8"	(5.08 m)
Stick	13' 6"	(4.11 m)

Boom structure: All welded construction with fabricated box type design. Aluminum bronze bushings with grease grooves at boom pivot points.

BOOM REACH

Based on 42" (1,067 mm) high truck frame.

	30' 0"	(9.14 m)
Horizontal	30' 0"	(9.14 m)
Vertical	37' 6"	(11.43 m)

CYLINDERS

Hydraulic cylinders with wear rings on pistons and bolt on glands for extended life. All cylinders are made of heavy wall steel tubing. Induction hardened cylinder rods with heavy chrome plating.

Main boom: 6" x 51" (152 mm x 1295 mm) with 3-1/2" (89 mm) rod.
 Stick boom: 6" x 35" (152 mm x 889 mm) with 3-1/2" (89 mm) rod.
 Spherical bearings at all boom cylinder pivots.

AVAILABLE POWER SOURCES

Cummins QSB 6.7 diesel Tier 3 173 hp (129 kw) @ 2200 RPM.
 John Deere 6068 H diesel, Tier 3 173 hp (129 kw) @ 2200 RPM
 Fuel Reservoir: 120 gallon (454 L).

HYDRAULIC SYSTEM

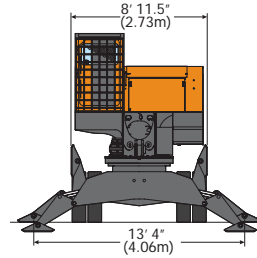
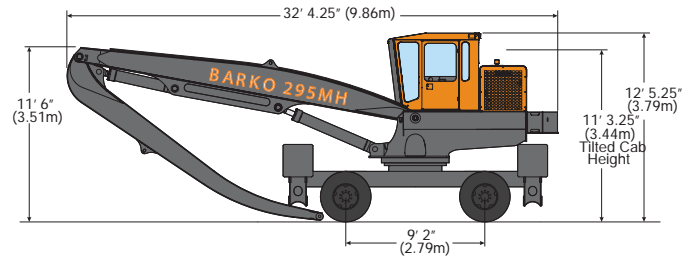
120 gallon (454 L) hydraulic oil reservoir with return line filter, shut off valve on pump suction line.
 Pumps: Variable displacement piston pump producing 88 gpm (333 LPM).
 Heavy wall tubing and multi-wire braided hose throughout system.
 Main system operating pressure 3000 PSI (206 BAR).
 Quick disconnect diagnostic ports.

SWING SYSTEM

Continuous rotation on 39" (889 mm) internal tooth turntable bearing.
 Swing speed 8 RPM - Power transmitted through dual motors and planetary gearboxes.
 3000 PSI (206 BAR) operating pressure.
 Swing Torque: 30,000 ft. lbs (40,674 Nm) (100% Theoretical).
 Tailswing: 8' 5-1/2" (2.57 m) without counterweight
 8' 6-1/2" (2.6 m) with optional counterweight.

OPERATOR'S CAB

F.O.P.S. certified.
 38-1/2" x 55" (978 mm x 1397 mm) forward sloping pressurized cab with sound suppression insulation.
 Roof window, sliding side windows with tinted glass on all windows.
 Pantograph windshield wipers, washer, and dome light.
 Adjustable suspension style seat with arm rests.
 Dual joystick controls.
 Dash console with cab accessory switches and start/stop controls all located for easy access.
 Warning lights & monitor system.
 Digital Display: water temperature, voltage, engine oil pressure, fuel, hour meter and engine RPM.
 AM/FM radio, CD player, CB radio.
 Swing control operated by foot pedal.
 Swing out door and front cab guard.
 (6) 12 volt DC halogen cab lights.
 Climate controlled heating and air conditioning.
 Central turntable greasing system.

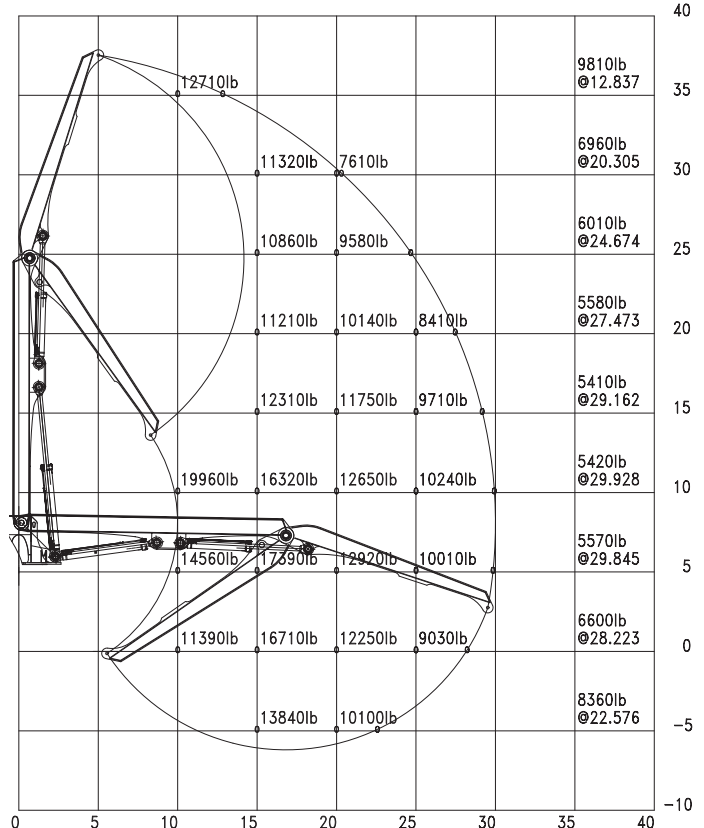


UNDERCARRIAGE

Hydrostatic Drive: Two speed, 2WD powershift transmission powered by a single variable displacement piston motor.
 Axles: Planetary drive axles front and rear.
 Front oscillating 7 degrees in frame and rear rigid to frame.
 Service Brakes: Hydrostatic-dynamic braking mechanism.
 Hydraulic multi-disc brakes on all four wheels operated by foot pedal.
 Parking Brakes: SAHR brake acting on transmission.
 Travel Alarm
 Steering: Hydraulic two wheel steering.
 Stabilizers: Front and rear mounted fold-down type hydraulic stabilizer legs with a 13' 4" (4.06 m) spread, four double acting cylinders with lock valves, 7" bore x 22" stroke (177 mm x 885 mm) with 4" (101 mm) rods.
 Low Speed: 12 MPH (19 km/h)
 High Speed: 3 MPH (4.8 km/h)
 Maximum Gradeability: 43%
 Wheelbase: 9' 0" (2.74 m)
 Turning Radius: 22' 1" (6.73 m) outside tires.

MISCELLANEOUS

Weight with standard equipment, 7,000 lb. (3,175 kg) cast steel counterweight and oil: 43,000 lbs. (19,054 kg) (not including attachment)
 Equipment greased and hydraulic tank filled.
 Removable panel for serviceability.



BARKO HYDRAULICS, LLC

One Banks Avenue | Superior, WI 54880 | Ph: 715.392.5641 | Fx: 715.392.3931 | www.barko.com